

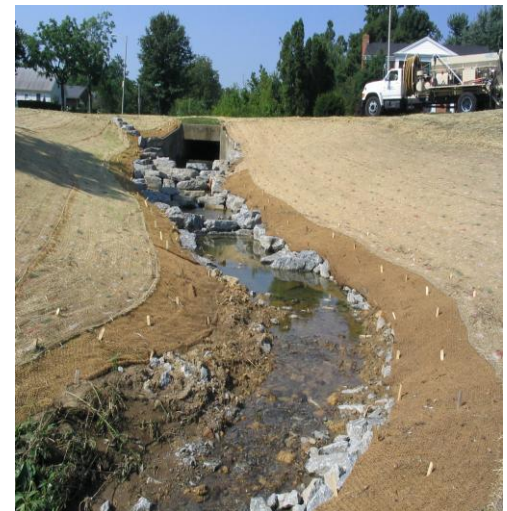


## Eastland Streambank Enhancement Lexington, KY July, 2006

Eric Dawalt was contracted by the city of Lexington to perform an urban streambank enhancement. EcoGro was sub-contracted to install an in-stream sediment check dam using Filtrexx® compost Filtersoxx during channel excavation. EcoGro seeded a designated riparian buffer area along the banks of the stream with native grasses and wildflowers. The exposed soil was then covered with erosion control blanket. Because of its close proximity, EcoGro was able to provide ongoing maintenance and monitoring of the restoration to ensure successful habitat establishment. Selective herbicide treatments, native plant species identification, noxious weed abatement and ongoing habitat management is critical for the long term installation of native grasses and wildflowers.

**Project Reference:** Contact EcoGro

**Funding Source:** Lexington-Fayette Urban County Government, Division of Engineering



### Key Features:

- Filtrexx® Filtersoxx
- Bank stabilization
- Urban hydrology
- Native wildflowers
- Riparian buffer
- Maintenance
- Biodegradable erosion controls

[www.EcoGro.net](http://www.EcoGro.net)

(859) 231-0500

P.O. Box 22273, Lexington, KY 40522