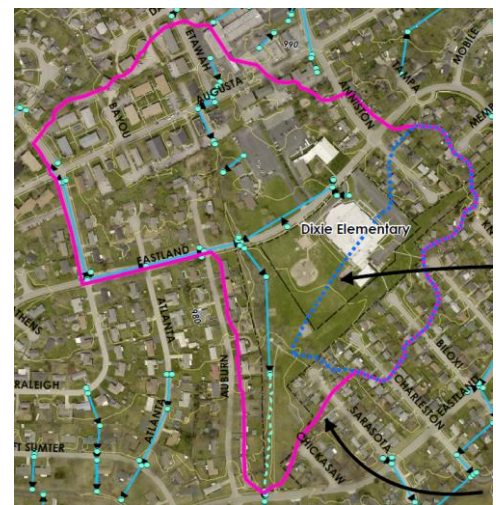
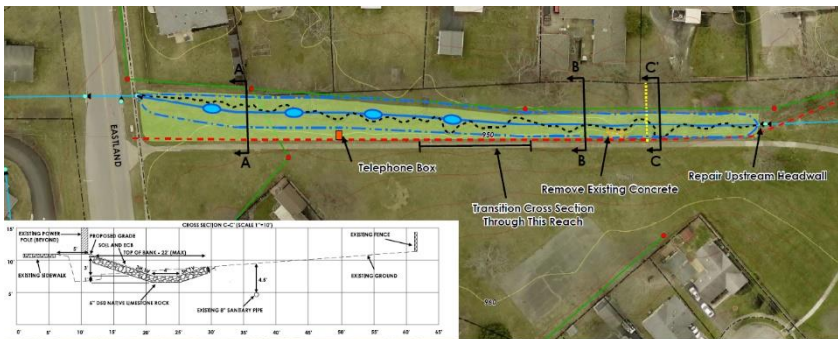




Dixie Park Stream Feasibility Study

Lexington, KY
April - June, 2018

The project team of EcoGro, Ridgewater and Stantec was hired by LFUCG Division of Environmental Services to develop a conceptual plan for a small urban stream in a city park. Our assignment was to assess the conditions and options for nearly 600 linear feet of this tributary for West Hickman Creek. The site is adjacent to a public school and the walkways through the park provide pedestrian access for students and parents. The first concern was to mitigate potential safety issues of eroded stream banks (nearly 4 feet vertical drop) beside the edge of a public walkway. Second, was to improve water quality and stream habitat through nature-based design. Because the eroded gully was unable to be maintained by turf mowers, the third goal was to improve greenway aesthetics with flowering plants. Furthermore, the team was tasked to evaluate opportunities to reduce potential impacts associated with flooding on adjoining properties. The study provided mapping the contributing watershed, analysis of stream flow regimes, cross sections for proposed stream channel, bioretention and “green” stormwater BMPs as well as cost estimations.



www.EcoGro.net
(859) 231-0500

P.O. Box 22273, Lexington, KY 40522